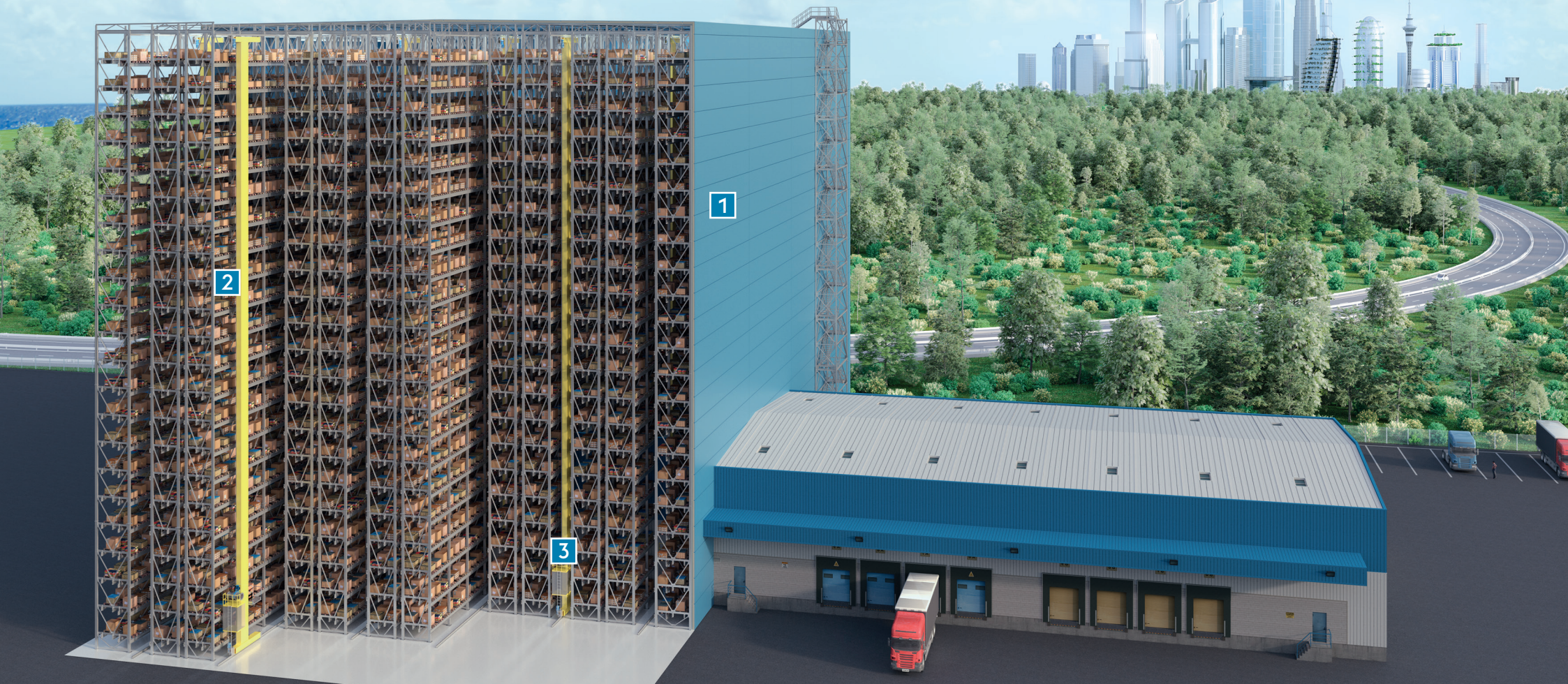


BACKBONE OF MODERN LOGISTICS.

High-tech high-bay warehouses are the core of modern just-in-time logistics. Demand is growing, spurred on by the worldwide boom in online retail. Self-supporting high-bay storage systems from voestalpine, made with premium quality steel sections, are being used all over the world in many of the most challenging projects.



1 A supporting role

High-bay warehouses are built using a silo construction method in which the steel structure supports the roof and walls. Instead of standing inside of a hall, the construction itself functions as the base upon which the roof and wall panels are attached, thus forming the building. voestalpine handles the entire process – from planning and engineering to production and assembly. High-bay warehouses from voestalpine enable fully digitalized warehouse management.

2 Heights up to 50 meters

Reaching great heights yet firmly grounded: any height up to 50 m can be realized with the assured quality of cold roll-formed sections from voestalpine. This is especially useful where space is tight or land prices are high. The design reduces the space required and creates room for more merchandise. The special challenge here: the structures must be able to withstand the heavy weight and wind loads.

3 High-tech system solutions

Different stored goods require different storage types: whether the need is storage for traditional Euro pallets, large and bulky goods, small parts – or even deep-freeze storage with internal temperatures as low as -28°C . voestalpine's high-tech solutions cover a wide range, for all kinds of requirements.

voestalpine

ONE STEP AHEAD.